

SAN LUIS OBISPO COUNCIL OF GOVERNMENTS

STAFF REPORT

MEETING DATE: October 7, 2009
SUBJECT: Templeton-Atascadero Bikeway Connector

SUMMARY

In September, 2009, Caltrans District 5 submitted a grant application for Interregional Transportation Improvement Program (ITIP) Transportation Enhancement (TE) funding for construction and environmental determination of the Templeton-Atascadero Bikeway Connector in the total amount of \$4 M. The grant application requires a local agency maintenance agreement and a \$40,000 match. This commitment was required as a component of the grant submitted by the September 1st application deadline.

SLOCOG staff provided this commitment subject to Board ratification due to the regional significance of this project, prior Board support, the opportunity to leverage \$4 M, and the time (four + years prior to construction) to negotiate a final long term maintenance agreement with stakeholder agencies.

RECOMMENDATION

- Staff:**
1. Support Caltrans ITIP grant request
 2. Approve Maintenance Agreement Commitment
 3. Provide \$40,000 match (SHA); and
 4. Negotiate with local agencies for long term maintenance agreement

TTAC: Approve staff recommendation

CTAC: Approve staff recommendation

BACKGROUND

The 2005 Regional Transportation Plan (RTP) Vision 2025 includes a Templeton-Atascadero Bikeway Connector. This connector becomes increasingly important as there exists no formal roadway or trail connection between Templeton and Atascadero aside from US 101 and pedestrians and cyclists currently tend to use the Union Pacific Railroad (UPRR) tracks or informal routes to make this connection. The SLOCOG Board has consistently supported closing this regional bikeway gap and increasing safety and security of bicyclists and pedestrians using this route.

SLOCOG funded the Templeton-Atascadero Bikeway Connector Constraints Report (completed in July of 2003). County General Services Department was lead agency on the study. The purpose of this constraints report was to provide a resource inventory for the study area and give direction to locating the preferred alternative for the Bikeway Connector. A map identifying potential trail segments is provided on page C-6-4.

Caltrans District 5 attempted to secure Interregional Transportation Improvement Program (ITIP) Transportation Enhancement (TE) funding in 2005. The project was deemed eligible but was not awarded ITIP TE funding at that time. SLOCOG continued to pursue various funding sources and was successful at securing 2008 Regional Transportation Improvement Program (STIP) Transportation Enhancement (TE) funding for preliminary engineering for the 2012/13 fiscal year.

The constraints report is an initial step providing research and analysis needed for state and federal environmental review requirements as well as for necessary permits. It will, however, become outdated and be of less use if the project is not pursued for development in the near future.

DISCUSSION

In an interest to secure construction funding before the constraints report becomes outdate, Caltrans District 5 has chosen to seek ITIP TE funding for the construction of the Templeton-Atascadero Bikeway Connector this year (Application deadline was September 1, 2009). San Luis Obispo County General Services is currently the lead agency on the project agreeing to the requirements of the ITIP TE application in 2005. If District 5 is successful in securing the ITIP TE funding Caltrans will become the lead agency on the project. Caltrans has requested a maintenance agreement and the grant requires a local match.

Due to the time constraints and project importance, SLOCOG staff provided a letter of support, committed the required local funding match, and provided a maintenance letter subject to Board approval. SLOCOG will continue to work with local agencies on a maintenance agreement.

Full maintenance costs cannot be determined until a route is selected and length and bridge structures are known. Projected maintenance costs *could* include the following:

- Striping replacements
- Landscape maintenance
- Sweeping
- Microsurfacing (\$12k/mile), to be done on a 8-10 year interval
- Pavement overlay (\$128k/mile), to be done on a 20 year interval¹

Future commitments of maintenance and other associated costs will be brought to the board if/when the grant is awarded and funds for the trail are available.

Route Selection

The proposed trail segments map on page C-6-4 identifies trail segments considered in the constraints report. The report further identifies which trial segments have the lowest constraint associated with its construction. The report identifies the following trail segments as having the lowest associated constraint level and likely connections (Map shown in Attachment 2):

- Segment 1: East of Templeton High School (connects to Vineyard Drive)
- Segment 2: Connects to Segment 1, south of high school
- Segment 8 (completed): Adjacent to Ferrocarril road in Atascadero
- Segment 6: Along riverbed (connection between Segment 2 and Segment 8)
- Segment 5: Adjacent to HWY 101 (would connect Segment 2 to El Camino Real in Atascadero, bypasses Segment 8)

¹ Cost estimates provided by the City of San Luis Obispo staff

San Luis Obispo Council of Governments



Regional Transportation Planning Agency
Metropolitan Planning Organization
Census Data Affiliate
Service Authority for Freeways and Expressways

Arroyo Grande
Atascadero
Grover Beach
Morro Bay
Paso Robles
Pismo Beach
San Luis Obispo
San Luis Obispo County

Ronald De Carli, Executive Director

September 1, 2009

Rich Krumholz
Caltrans District 5
50 Higuera Street
San Luis Obispo, CA 93401

RE: Support for the Templeton-Atascadero Bike Connector

This letter is in support of the Templeton – Atascadero Bikeway Connector. This project is identified in the 2005 RTP, Vision 2025 as high priority. The SLOCOG Board supports this project and was successful during the 2008 STIP to secure \$200,000 for PS&E in the 2012/13 fiscal year.

At this time SLOCOG would like to express its support and encouragement of Caltrans pursuing federal transportation enhancement funding for this project. This support is to the extent that SLOCOG intends to take the two following actions as responsible agency:

1. Accept the responsibility of maintaining the trail once constructed.
2. Commit \$40,000 for local agency match

These actions will be taken to the SLOCOG Board for approval Wednesday, October 7, 2009. A resolution may be provided if necessary.

Should you have questions about the above action or follow-up regarding this issue please contact me at (805)788-4251 or Geiska Velasquez of my staff at (805) 788-2104 or gbaker@slocog.org.

Thank you,

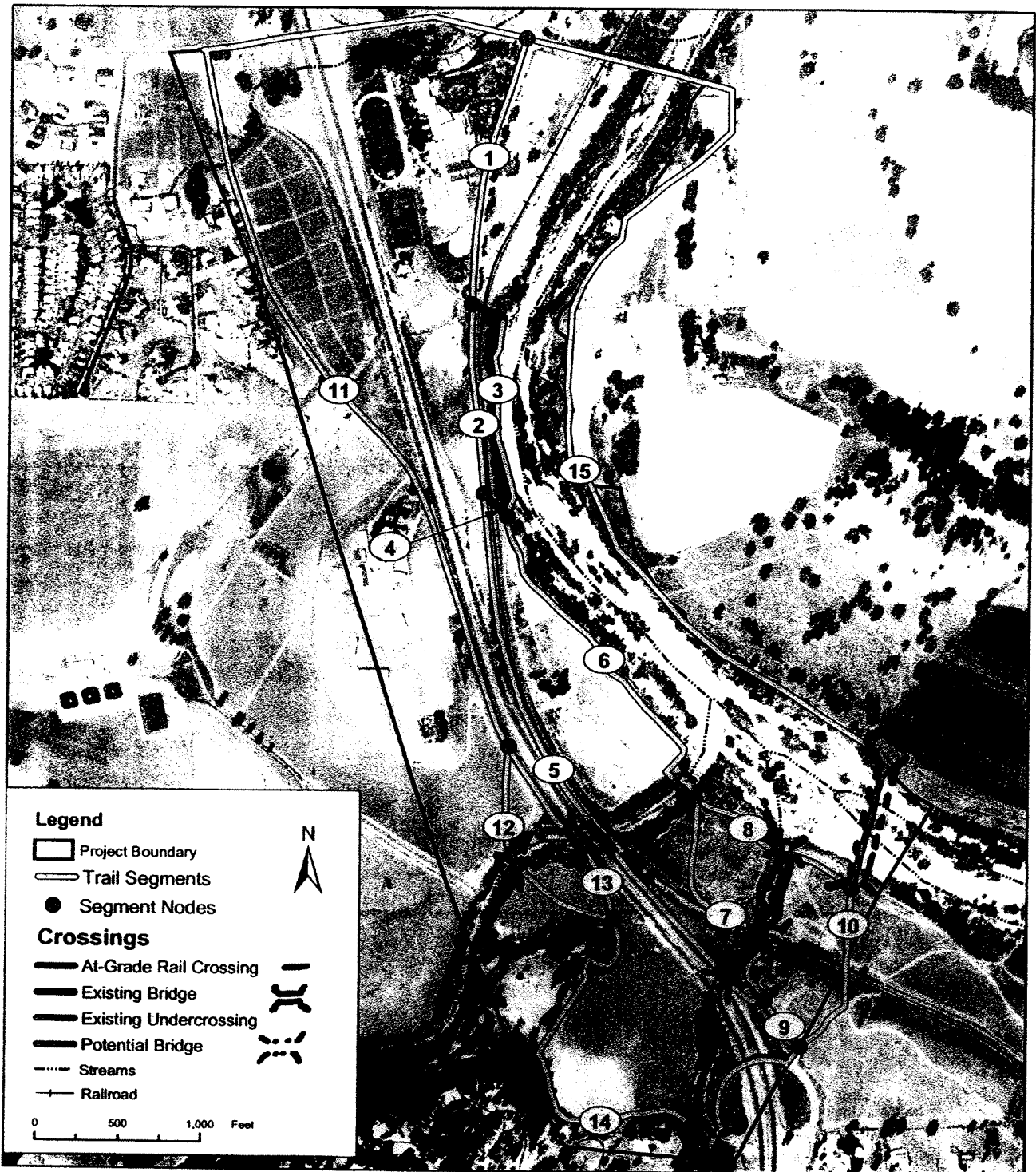
Ronald DeCarli, Executive Director

Cc: Richard Murphy
Cc: Paul Martinez

1150 Osos St. Suite 202, San Luis Obispo, CA 93401 ♦ Tel. (805) 781-4219 ♦ Fax (805) 781-5703
E-mail: slocog@slonet.org ♦ Internet <http://www.slonet.org/~ipslocog>

Attachment 2: Constraints Study Map

Templeton-Atascadero Bikeway Connector Constraints Analysis
Section 1.0 Introduction



Source: Rincon Consultants, Inc., 2003.

Proposed Trail Segments

Figure 1-2
San Luis Obispo County